

NOTE: DO NOT DISCARD the Parts List from the Instruction Bulletin. Place the Parts List in the appropriate place in the machine manual for future reference. Retaining the Parts List will make it easier to reorder individual parts and will save the cost of ordering an entire kit.

NOTE: Numbers in parenthesis () are reference numbers for parts listed in Bill of Materials.

Installation instructions for **kit number 9008019**

SYNOPSIS:

This kit contains the parts needed to install an overhead guard onto T16 scrubbers equipped with either the optional front bumper kit or Pre-Sweep kit.
 Please follow step-by-step instructions.

SPECIAL TOOLS / CONSIDERATIONS: NONE

(Estimated time to complete: 1.25 hours)



PROTECT THE ENVIRONMENT

Please dispose of packaging materials, old machine components, and hazardous fluids in an environmentally safe way according to local waste disposal regulations.

Always remember to recycle.

PREPARATION:

1. Park the machine on a clean level surface, turn off the machine, and remove the key.

FOR SAFETY: Before leaving or servicing machine, stop on level surface, turn off machine, and remove key.

INSTALLATION:

1. Use four SEMS M8 X 1.25 hex screws (2) to install the overhead guard mounting bracket (1) onto the front to the recovery tank. (Fig. 1)

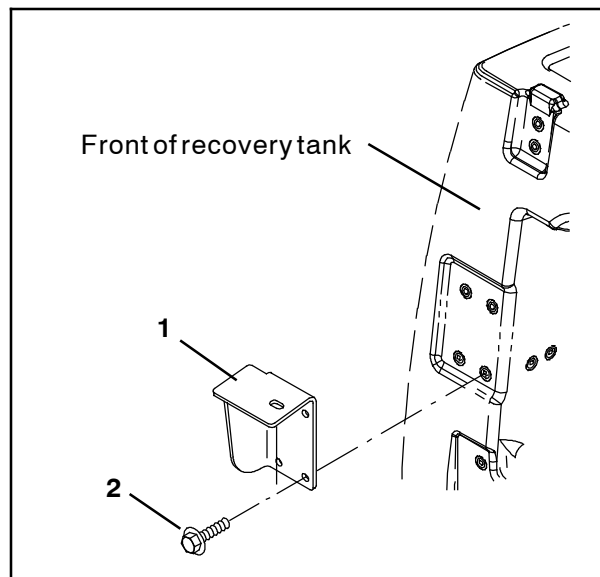


FIG. 1

NOTE: Do Not completely tighten any hardware used to install overhead components onto the machine until later in this installation procedure. All hardware is tightened later during final adjustment.

- Machines with front bumper option only:**
Remove the plugs from the front bumper. Discard the plugs. (Fig. 2)

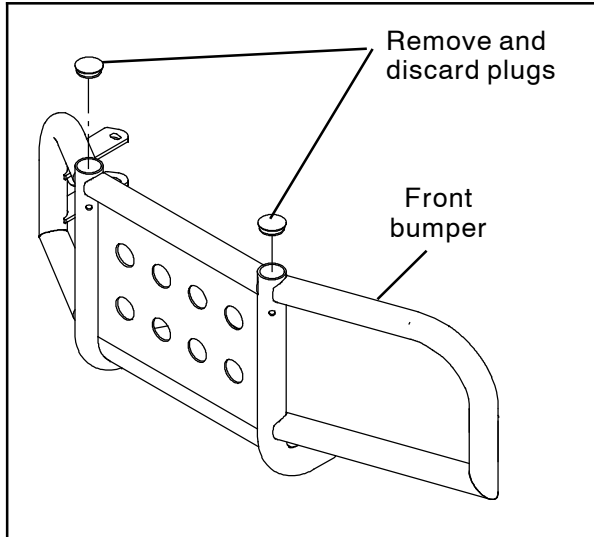


FIG. 2

- Machines with front bumper option only:**
Use one M8 socket head screw (8), one flat washer (14), one steel tube (9), and one M8 hex nut (7) to secure the front leg of the overhead guard tube (4) into the front bumper. (Fig. 3)

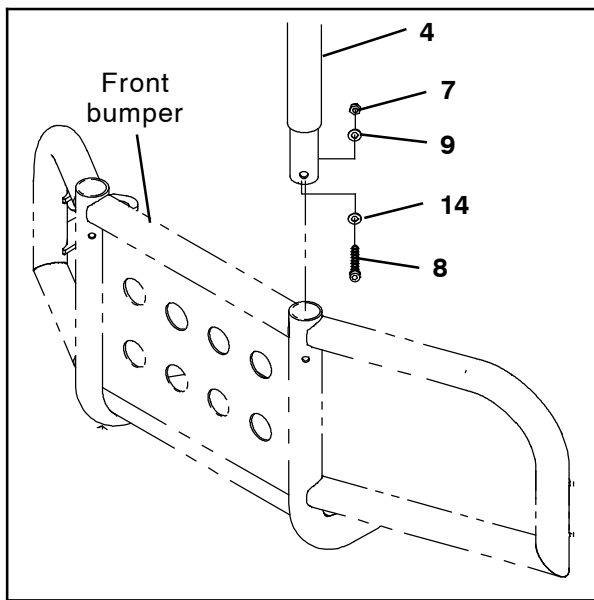


FIG. 3

- Machines with Pre-Sweep option only:**
Use one M8 socket head screw (8), one flat washer (14), one steel tube (9), and one M8 hex nut (7) to secure the front leg of the overhead guard tube (4) into the overhead guard mounting bracket already installed on the Pre-Sweep assembly. (Fig. 4)

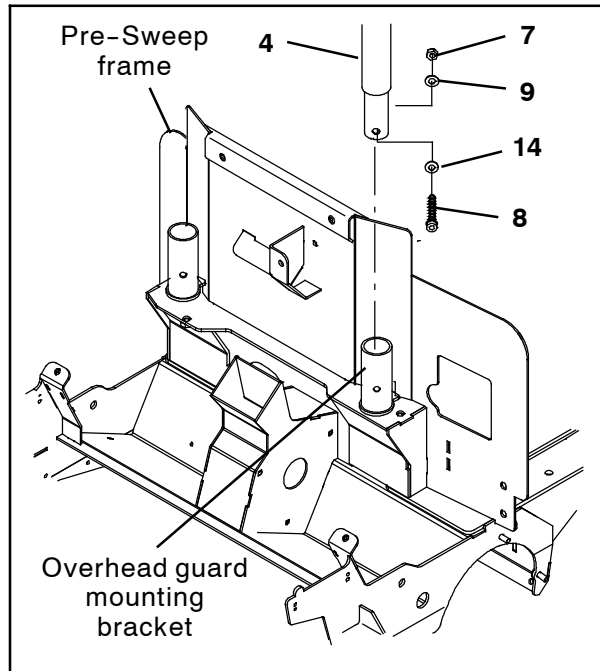


FIG. 4

- Use one M8 hex screw (5) and a flat washer (6) to install the overhead guard tube (4) onto the frame of the machine. (Fig. 5)

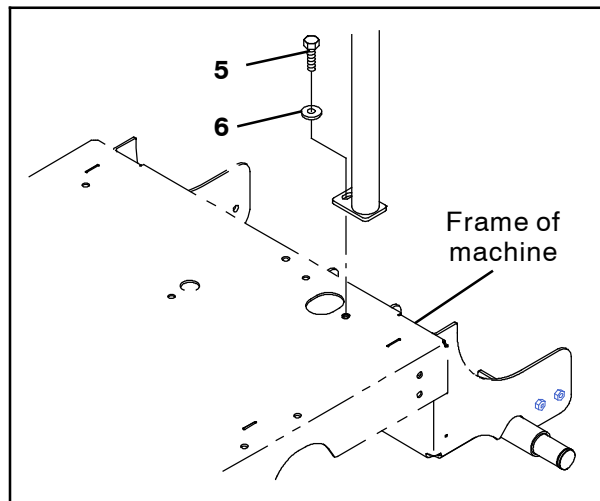


FIG. 5

NOTE: If necessary, move the rear inner corner battery to make additional room to install the overhead guard tube (4) onto the frame of the machine.

6. **Machines with front bumper option only:**
Use one M8 socket head screw (8), one flat washer (14), one steel tube (9), and one M8 hex nut (7) to secure the front leg of the overhead guard tube (3) into the front bumper. (Fig. 6)

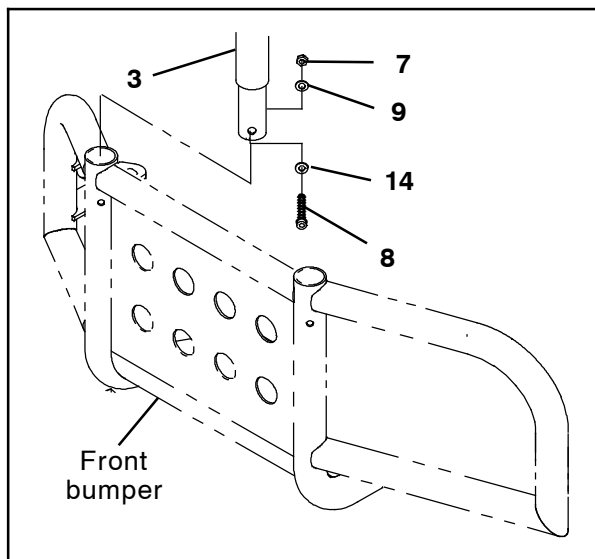


FIG. 6

7. **Machines with Pre-Sweep option only:**
Use one M8 socket head screw (8), one flat washer (14), one steel tube (9), and one M8 hex nut (7) to secure the front leg of the overhead guard tube (3) into the overhead guard mounting bracket already installed on the Pre-Sweep assembly. (Fig. 7)

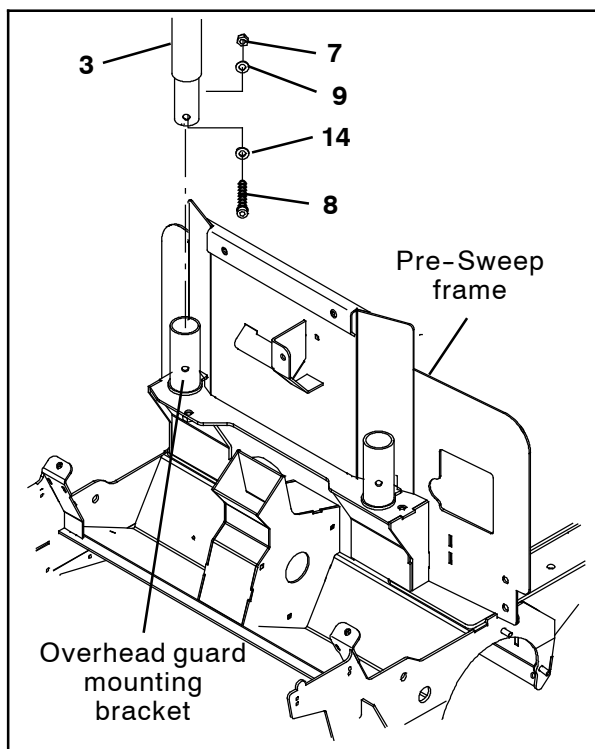


FIG. 7

8. Use one M8 hex screw (5), two flat washers (6), and one M8 hex nut (7) to install the rear leg of the overhead guard tube (3) onto the overhead guard mounting bracket (1). (Fig. 8)

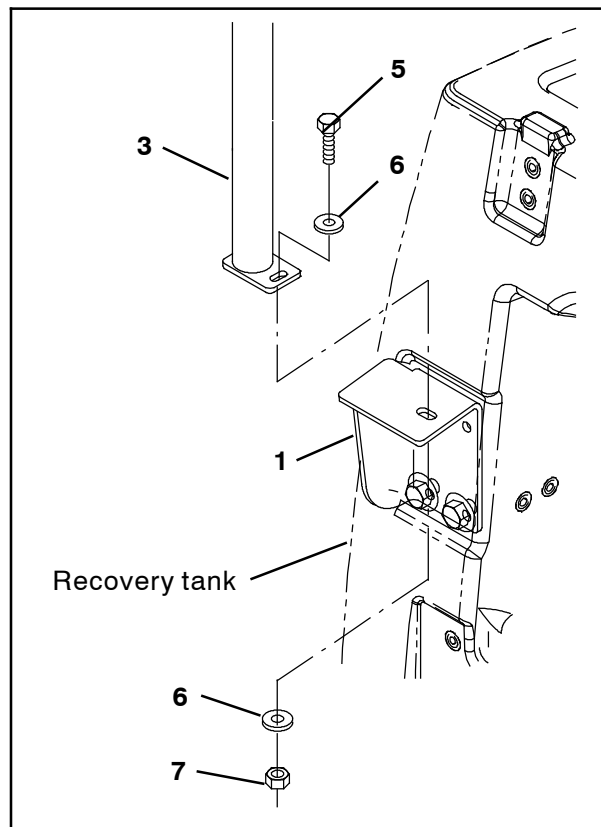


FIG. 8

NOTE: Do Not attempt to install the overhead guard top (10) onto the machine alone. Seek assistance to install the overhead guard top onto the overhead guard tube (3) and overhead guard tube (4).

9. Lift the overhead guard top (10) onto the overhead guard tube (3) and overhead guard tube (4). (Fig. 9)

10. Use eight M10 hex screws (11), sixteen flat washers (12), and eight M10 hex nuts (13) to secure the overhead guard top (10) onto the overhead guard tube (3) and overhead guard tube (4). (Fig. 9)

11. Tighten all loose hardware to secure the overhead guard kit onto the machine. (Fig. 2, Fig. 3, Fig. 4, Fig. 5, Fig. 6, Fig. 7, Fig. 8, and Fig. 9)

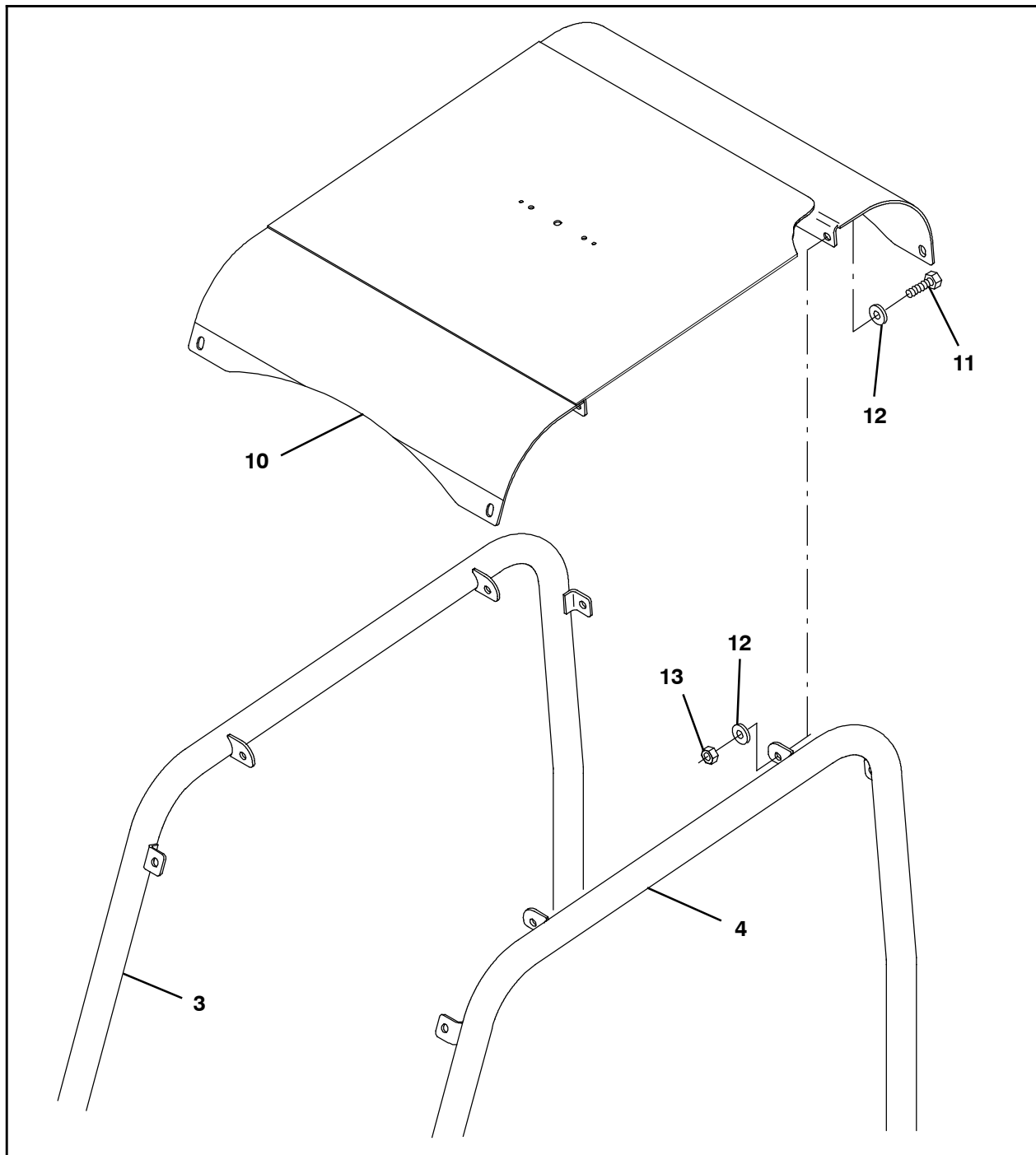


FIG. 9

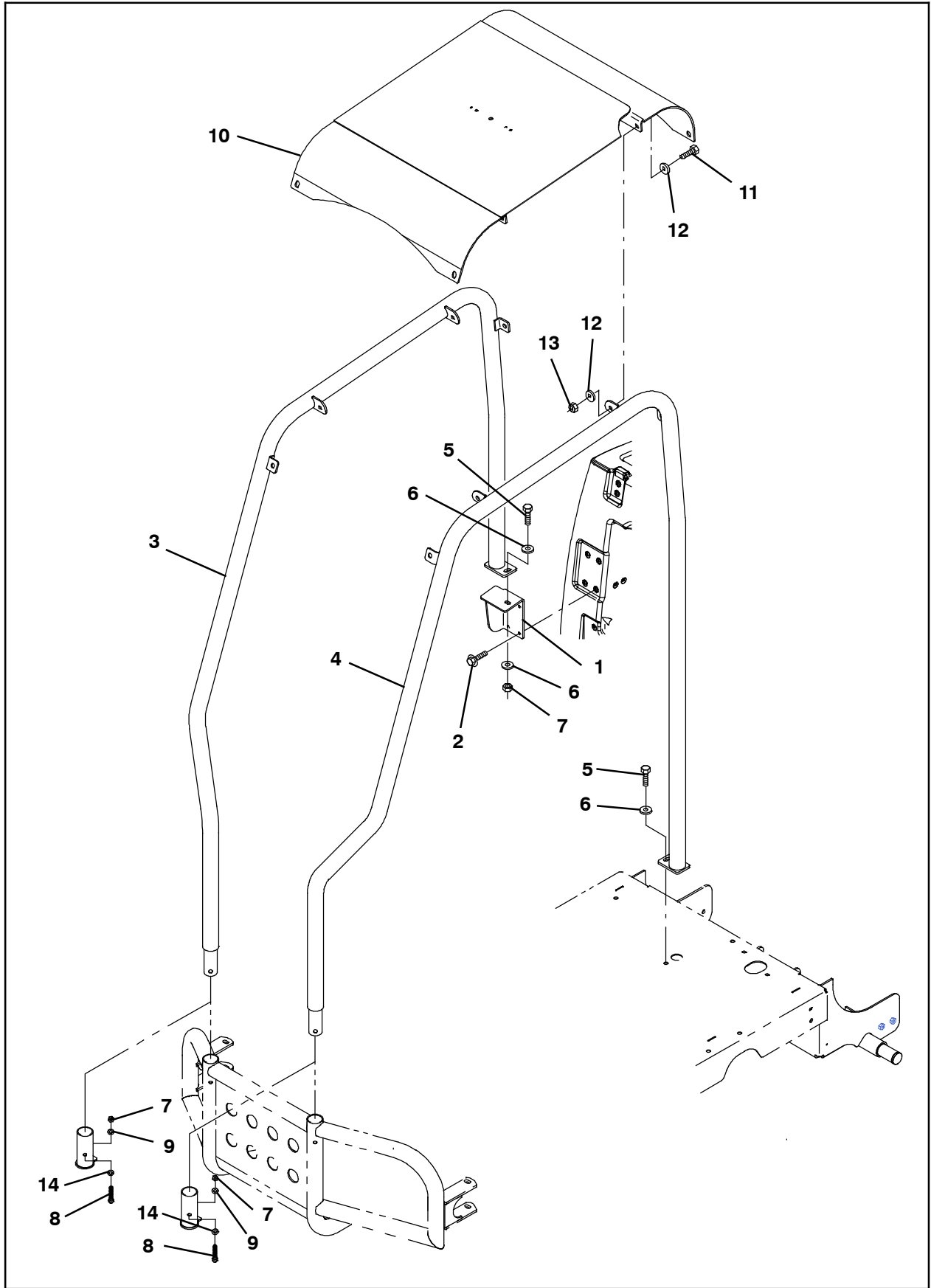


FIG. 10

Bill Of Materials For OHG Kit, CI W/ Hd Bmpr Or Pre-Sweep - 9008019

	Ref.	Tennant Part No.	Description	Qty.
▽		9008019	OHG Kit, CI W/ Hd Bmpr Or Pre-Sweep	1
▲	1	1054893	Bracket, Mtg, OHG	1
▲	2	1020341	Screw, Hex, M8 X 1.25 X 20, Ss, SEMS	4
▲	3	1069269	Tube Wldt, OHG, RH, Pntd	1
▲	4	1069271	Tube Wldt, OHG, LH, Pntd	1
▲	5	39277	Screw, Hex, M8 X 1.25 X 25, 8.8	2
▲	6	32491	Washer, Flat, 0.31, Std	2
▲	7	08709	Nut, Hex, Lock, M8 X 1.25, NI	3
▲	8	09030	Screw, Soc, M8 X 1.25 X 80, 12.9	2
▲	9	360352	Tube, 0.34id 0.62od 00.2l, Stl	2
▲	10	1054709	Guard Wldt, Ohg, Top	1
▲	11	03192	Screw, Hex, M10 X 1.50 X 30, 8.8	8
▲	12	32492	Washer, Flat, 0.38, Std	16
▲	13	41430	Nut, Hex, Lock, M10 X 1.5, NI	8
▲	14	1060648	Washer, Flat, 0.31B 0.67D .07, Stl, Blk	2

TENNANT COMPANY
P. O. Box 1452
Minneapolis, MN 55440-1452